



2022

Annual REPORT



Pictured: Garden City 321 Celebration

FISCAL YEAR
JUNE 1, 2021 - MAY 31, 2022

- ☎ 316-651-0114
- ✉ info@dsswichita.org
- 🌐 www.dsswichita.org

2022 ANNUAL REPORT

This annual report is a comprehensive report on the Down Syndrome Society of Wichita's activities throughout the 2022 fiscal year, which began on June 1, 2021 through May 31, 2022. This report is intended to give participants and donors insight into organizational standing.

For additional inquiries, please contact the office at 316-651-0114 or by email at info@dsswichita.org.



Pictured: Explore ICT participants volunteering at KS Food Bank

MESSAGE FROM THE BOARD PRESIDENT



Pictured: Denise Sawyer (orange shirt) with Team Ana Banana

“All our dreams can come true, if we have the courage to pursue them.” Walt Disney

This rings true for DSSW. Grants from Blue Cross and Blue Shield and the Kansas Health Foundation allowed us to move forward with our adult day exploration and wellness program, Explore ICT, in September 2021. Through Explore ICT, participants engage in community service, active learning (technology, cooking, life skills, etc.), and physical health and wellness initiatives, including the YMCA on a weekly basis. This same grant provided funding for the purchase of our first 15-passenger van for program transportation. We continued dreaming and were given a grant to pursue further job skills development opportunities including a food truck effort.

After the Dream Forward team spent several years researching programs and physical space for expansion, another dream finally came true. The board approved the purchase of the property at 734 S. Washington right in the heart of Wichita, which allows us to have a space we call home! Planning and renovations for several areas in the new space are underway, which will provide maximized, functional space.

Excitement abounded when we were able to meet in-person for our annual fundraisers: Parade of Stars Walk and the Jokers and Jazz Gala! Being together and working together does my heart good. Over the past several years as a board member, I realize that this organization continues to work because of the passion and heart that is displayed through those that join efforts to make progress. It's no secret that the pandemic made lasting changes in our world, but it also allowed our organization to update several of our processes in order to better serve families. We will always remain true to our mission while we continue dreaming forward.

So as we enter into our next fiscal year, I would like to thank our Executive Director, Natalie Rolfe, our Board members, families, donors, and volunteers, for all of your support this past year. "It takes a Village," and all of you are important members of the DSSW Village.

Denise Sawyer
Board President
Down Syndrome Society of Wichita

DSSW

Who We Are

The Down Syndrome Society of Wichita's mission is to provide programs and services that educate, connect, develop and advocate to improve the lives of the Down syndrome community.

Values

INCLUSION

We celebrate members of our community with Down syndrome and will strive to keep programming, events and ideas focused around their unique abilities.

AWARENESS

DSSW will raise awareness by building strong community relationships, corporate partnerships and maintaining a social media presence.

DEVELOPMENT

DSSW will create development opportunities for members of our community through effective programming, events and opportunities.

ADVOCACY

DSSW will advocate for those without a voice and assist them in speaking for themselves.



Pictured: Summer of Discovery participant at Freedom Hooves Therapeutic Riding Center

2022 RESULTS

17
NEW
FAMILIES

NEW FAMILIES

We welcomed over 17 new families to the organization, including some adults, newborns and families new to the area.

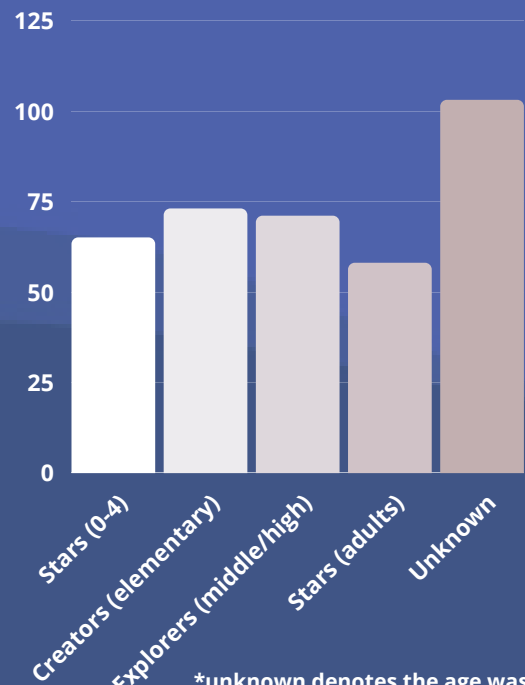
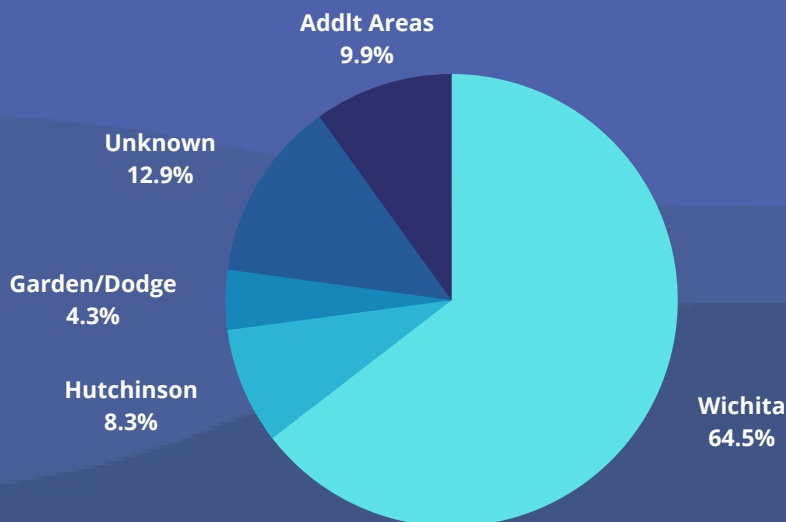
510+
REACHES

VIRTUAL AND HYBRID PARTICIPATION

The organization continued with hybrid programming including virtual learning series, in-person fitness sessions and in-person adult programming. One reach equals each single participant occurrence.

MAINTAINED STABILITY OF CURRENT SERVED GROUP

With the tracking of new families, the organization continues to broaden its reach, and now tracks the age breakdown and grouping of participants. Our organization serves over 360 families.



*unknown denotes the age was not collected or declined to provide at intake.

*Data samples taken from 2020-21 data.

FINANCIAL OVERVIEW

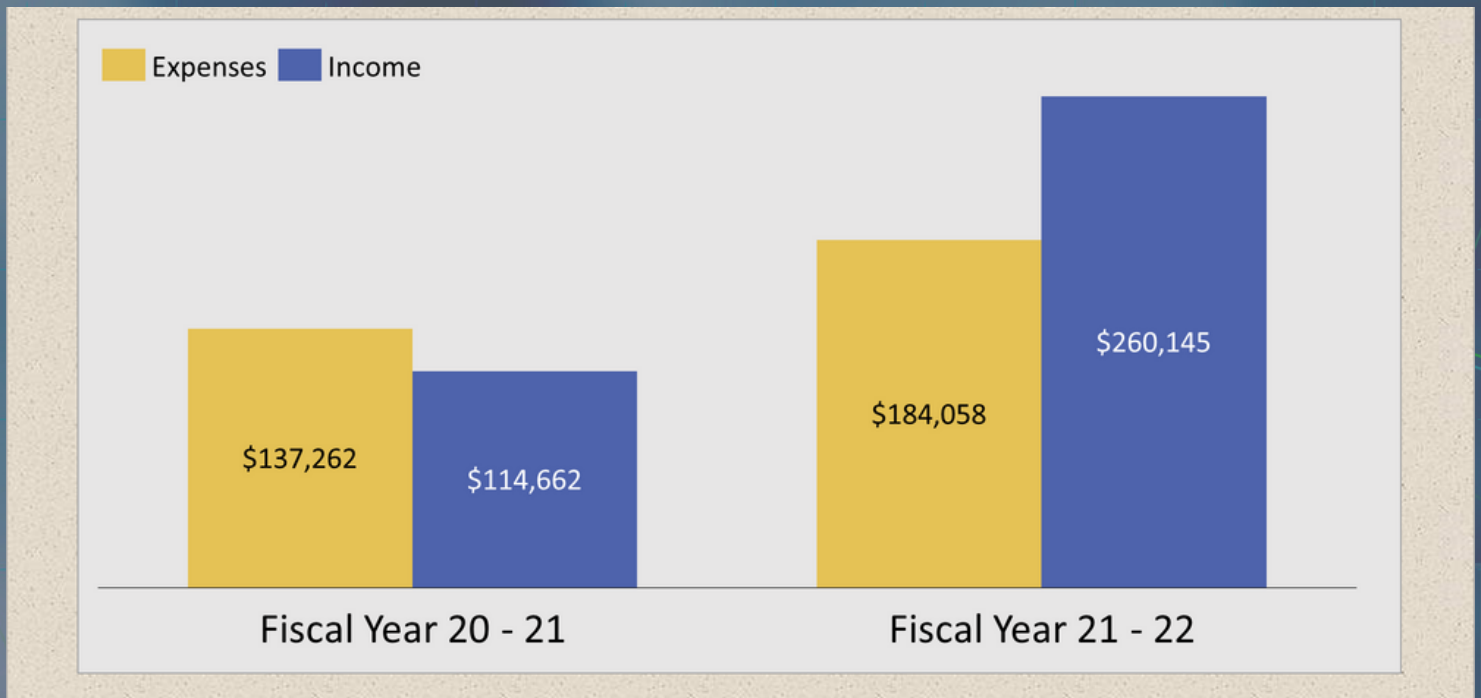
FINANCIAL PRACTICES

- DSSW is not a federally-funded agency, nor are we a United Way agency. Every dollar raised comes from either grants, fundraisers or donations.
- Our organization currently contracts with a grant writer on a limited basis (15 hrs./week) to address immediate funding opportunities.
- The organization participates in a 12-24 month external review with a contracted company to ensure sound financial practices. The last review was delayed due to the near halt of expenditures during COVID-19. The next review will happen during the 22-23 fiscal year.

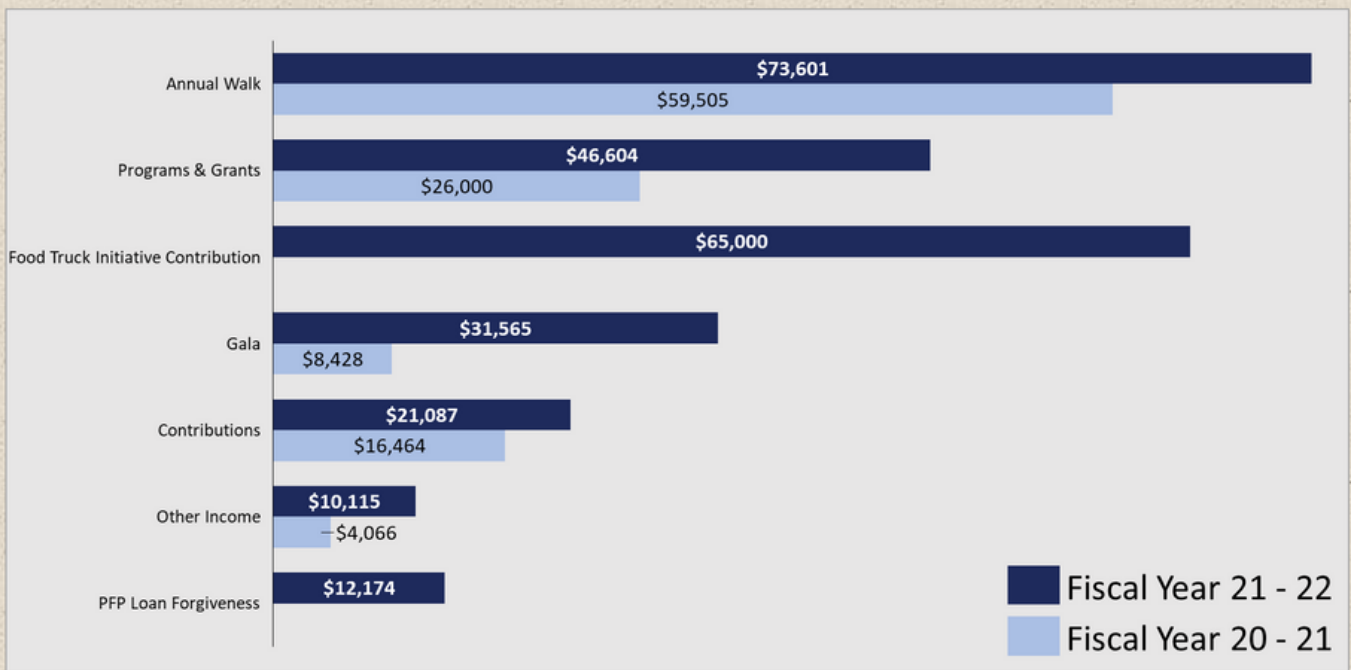
WAYS TO SUPPORT THE ORGANIZATION

- **Monthly Giving Program** - monthly contribution for supporters to give in a way that best fits their monthly budgeting.
 - **Memorial Giving Program** - family of deceased loved ones contribute gifts to the organization in lieu of friends sending flowers.
 - **Fundraising events** - Parade of Stars annual walk brings in nearly 50% of each year's operational budgeting, while the Jokers and Jazz Bash provides additional support for programming and services. The organization secures additional funding through grants, corporate contributions, direct contributions, and small fundraisers.
-

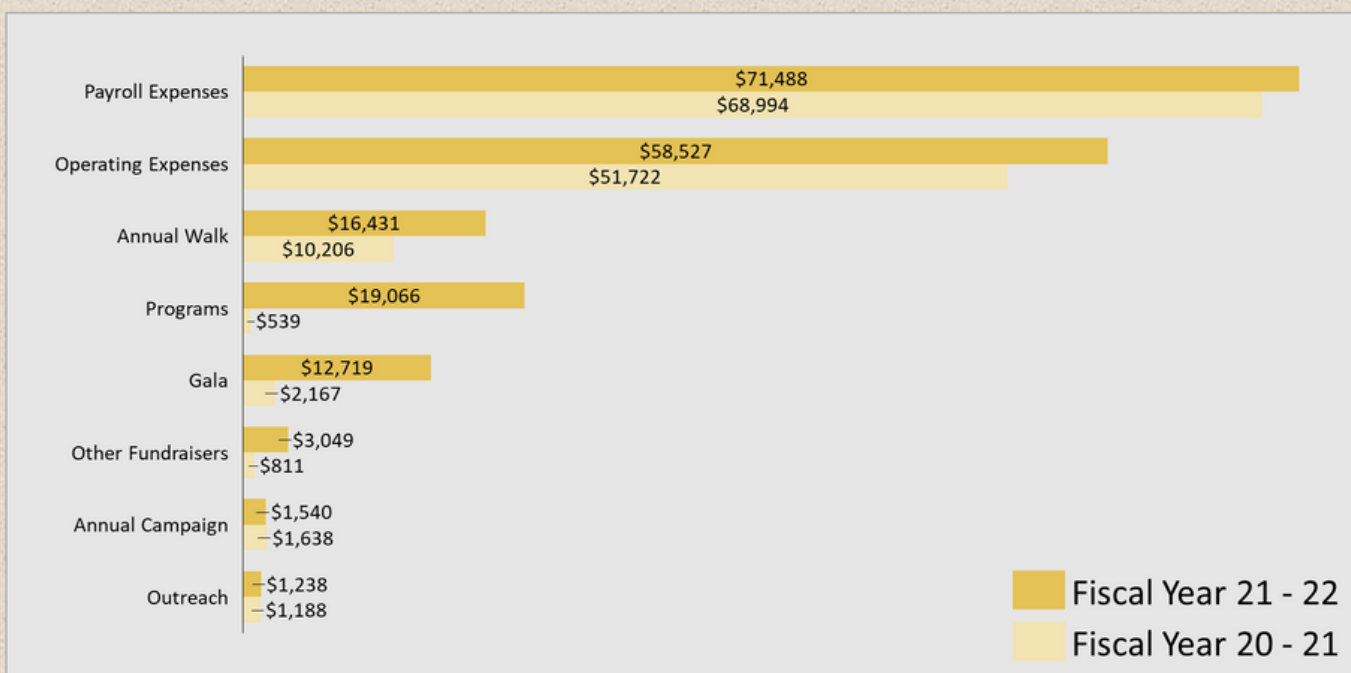
INCOME AND EXPENSE COMPARISON



INCOME COMPARISON



EXPENSE COMPARISON



Dream Forward

Since 2018, the Down Syndrome Society of Wichita has been on a journey of expansion to create valuable opportunities to serve our community with additional space, staff and much-needed resources to stabilize and create a more sustainable business model. After research, many site visits and parent surveying, the organization was able to pinpoint parent needs, along with potential programs and services for the future.

DSSW will always be a space for connectivity, resource sharing and networking for the Down syndrome community. As the only exclusive organization in the area, the focus on Down syndrome remains. The expansion project designed with DSSW families in mind, will provide access to quality services and programs, while remaining connected to the local Down syndrome community. The project goal is to stabilize the organization through sustainable programs, quality employees and heightened awareness.

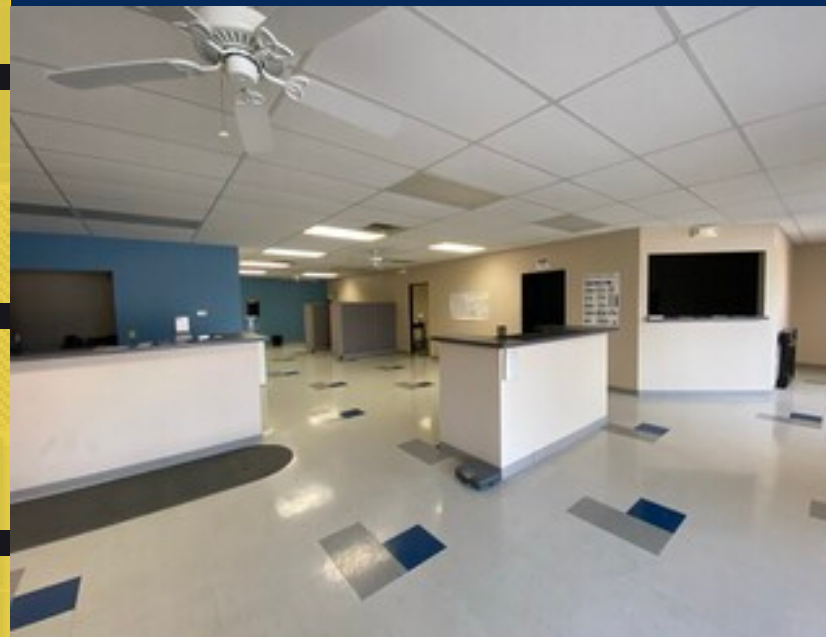
Major Items completed include:

- New owned center
- 1 - 15-passenger van for program participant transportation
- Explore ICT Adult exploration program start up
- Continued use of development contractors for additional funding

A NEW HOME

In May 2021, An offer was made for the purchase of a new space for the organization at 734 S. Washington in Wichita, KS. The new space is in the heart of the city, with access from all directions. The new center includes over 6,200 sq. feet of indoor space and nearly 2,000 sq. ft of outdoor space including:

- 1 quonset hut
- 2 kitchen spaces
- 2 warehouse spaces
- 1 large multi-purpose room
- 4 finished rooms/classrooms
- additional reception and open areas



WHAT'S AHEAD?

BUILDING RENOVATIONS

The organization has identified renovations needed for the building to be at full functionality, including 25+ items that need some level of attention. The renovations will maximize the functional space to include:

- 1 technology room
- * 1 life skills room
- 1 teen and adult lounge area
- 1 Learning Kitchen (*see below*)
- 1 storage warehouse and garage
- 1 multipurpose room
- 3 expanded rooms
- 1 administrative office
- 1 collab team room with kitchenette

LEARNING KITCHEN PROJECT

In May, the organization was awarded an \$85,000 reimbursable grant toward the Job development skills program, with funds going to complete the Learning Kitchen. Through this effort, participants will learn job skills and be prepared to secure jobs in the service and food areas, while also providing support for the organization's food truck program. The funding was provided through the ARPA grant, managed by the City of Wichita.

MORNING FOOD TRUCK

Funding for the morning mobile food truck was provided by an anonymous donor, through the Wichita Community Foundation. Plans for the program include a mobile truck that will move locations in Wichita regularly, but also provide job training and employment for adults with special needs. The job development program will serve coffees, lattes, and breakfast drinks, along with pre-packaged breakfast treats. The anticipated launch is in Fall 2022.

ADDITIONAL EMPLOYEES

Additional skilled workers are needed in order to continue development of the organization's stability and program opportunities.

CAPITAL CAMPAIGN

With the securing of the new location, a capital campaign is in the works. Donors will be able to provide support for the future efforts and allow the organization to further stabilize finances and fundraising models.

LARGE GRANTS AWARDED

- \$10,000 - Blue Cross Blue Shield - program grant
- \$24,250 - Kansas Health Foundation - program grant
- \$65,000 - Food Truck Initiative contribution
- \$85,000 - ARPA Grant Award (reimbursable grant)



LEADERS IN GIVING

Donors contributing over \$500

INDIVIDUALS & FAMILIES

Christine Bacci
Eric Butcher
Richard and Kim Dinkel
Scott and Darcy Eads
Matt Flamini
Bryan Green
The Hardin Family
David Michael Jensen
Wendy Johnson
Thomas Kirk
Mark & Michelle Kittrell
Steve Mahon
David & Susan May
Kevin Mullen
John Premkumar
Josh & Lisa Umbehr

BUSINESSES/ORGANIZATIONS

Air Capital Comic Con
Blue Cross Blue Shield
Congregation of St. Joseph
First National Bank
Kansas Health Foundation
Kansas Orthopaedic Center
Kansas Property Solutions
Kroger
PEC
Thrivent Funds
Wichita Community
Foundation

Pictured: Star participant
posing for the camera



MEMORIALS

Each year, several families celebrate the memory of their loved one through memorials towards the organization's program and services. We celebrate the legacies that these individuals have left behind and appreciate contributions made on their behalf:

Kurt Bauer
Ed Epperley
Colleen Eisenbart
Wanda Englert
Esteban Gallegos
Amanda Ray
Cherokee Scott





Natalie V. Rolfe

Executive Director
Down Syndrome Society of Wichita

Letter from the Executive Director

What a year! We took a pause during the pandemic to revamp our processes and plans and hit the ground running as we looked toward the future! Although we had to halt several programs and continue to adjust how we do business, I am very excited about the future of the organization and the momentum that's building. We've learned lots of patience, allowed ourselves stretching room to grow, made mistakes and learned tough lessons as we continue to dream forward into the future.

What does the future look like? We envision a bright future where individuals with Down syndrome are truly part of their communities – in classrooms, workplaces and suitable living spaces. Our dream is that we will continue to be a light and a voice for those who may not be able to shine alone. This is only accomplished through support and action of volunteers and families like you.

Although we dream of expanding our staff and contractor team, it takes a village to truly reach our goals and I encourage you to reflect on how you can share in the process. From time to time, some ask, "How can I help?" Now, more than ever, we need that help. I've highlighted a few ways for you to engage in support of the organization so that we are here for years to come, serving as a support for this dynamic community of individuals.

Have a few hours to spare? Consider volunteering. [Click here to sign up.](#)

Care to share in giving? [Click here to share a gift.](#)

I always welcome one-on-one conversations and invite you to come see the new space and visit about our future, your challenges, or simply just to chat. Email me at natalie@dsswichita.org and I'll send over several times to get a chat set up! Thank you for being a supporter of the organization!

Natalie V. Rolfe

"Effort increases action. Action creates momentum. Momentum creates success."
—Dwayne 'The Rock' Johnson



Pictured: Stars at the Jokers
and Jazz Bash 2022